



World Food
Programme

Fostering Community Resilience in Southern Africa through Preparedness Activities



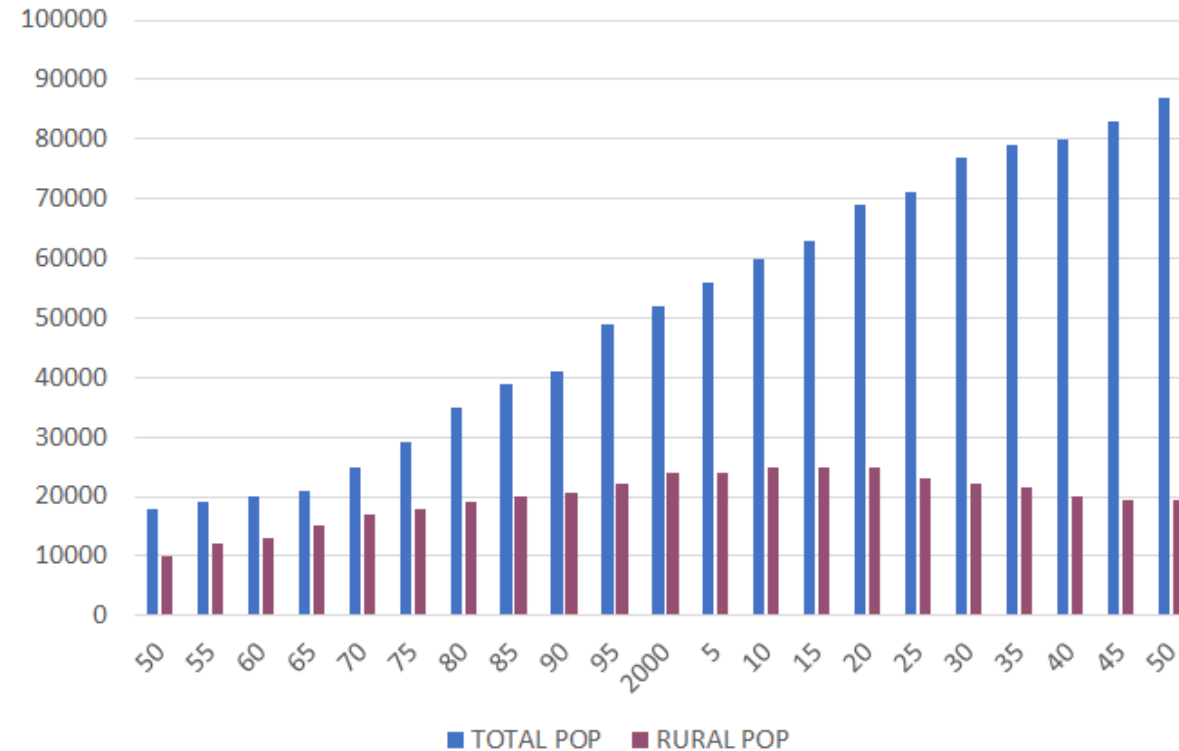
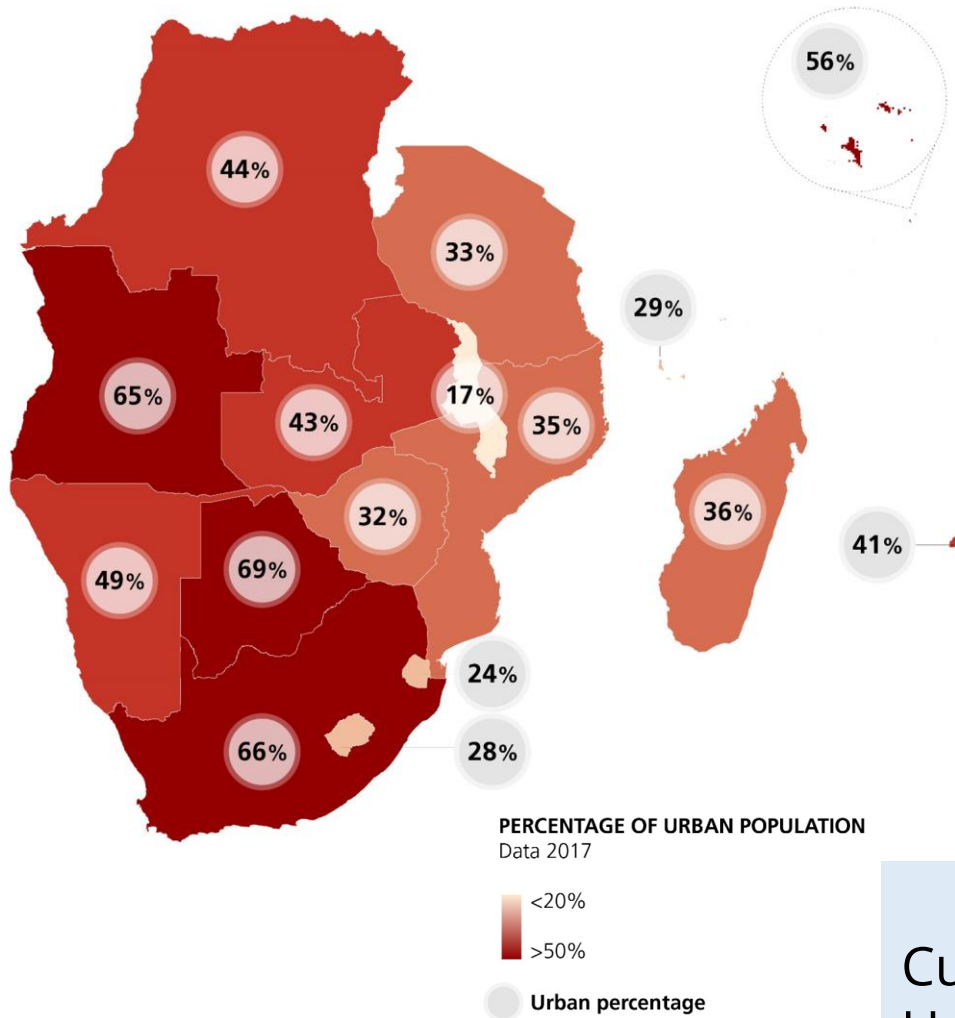
Lesotho, Madagascar, Mozambique, Zimbabwe



European Union
Civil Protection and
Humanitarian Aid

SAVING
LIVES
CHANGING
LIVES

Urban Profile of the SADC Region.



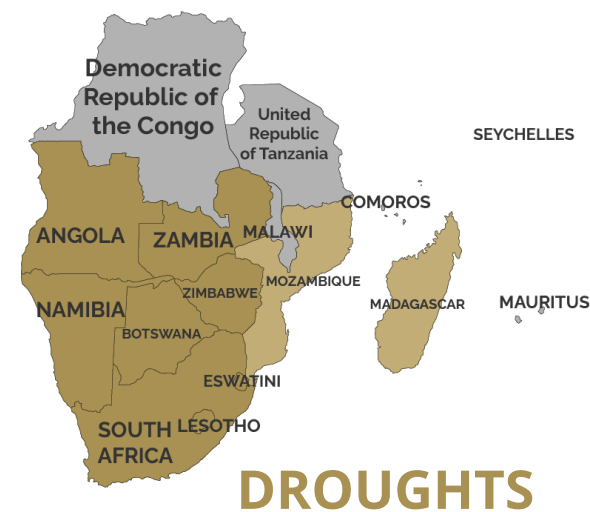
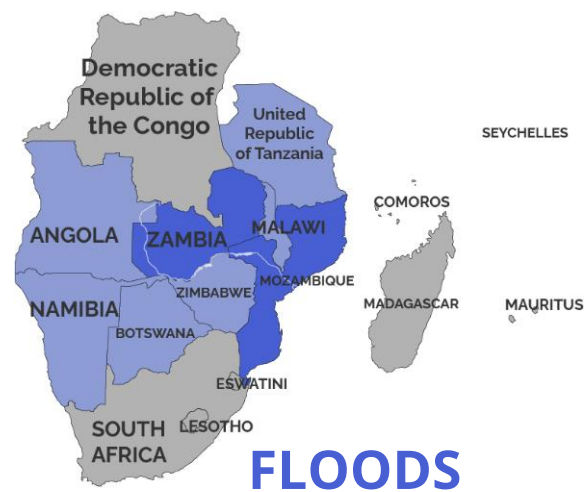
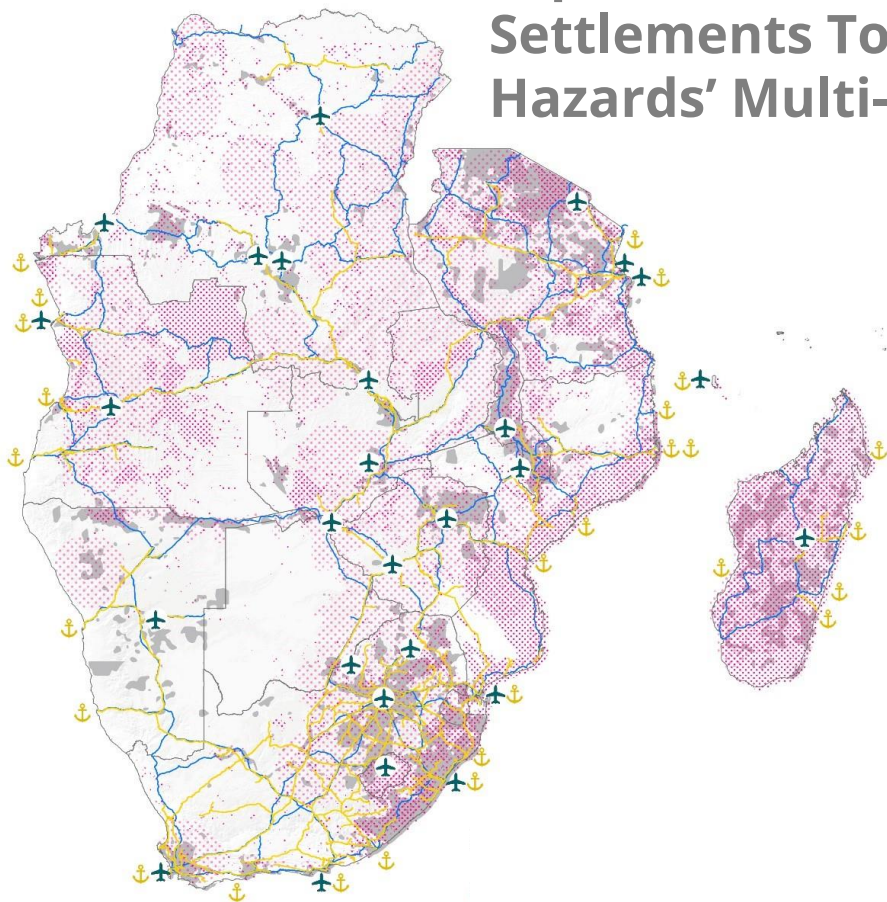
Source: Lipper L and Benton TG. 2020. Mega-trends in the Southern African Region. www.ccafs.cgiar.org.

Source: UN-Habitat. Regional Assessment on Urban Vulnerability and Resilience in Southern African Development Community Member States. 2022

Current **Urban** Population: **50%**
Urban Population living in **Informal** Settlements: **54%**
Urban Severely **Food Insecure** Population: **57%**

The Region is at Risk.

Exposed Human Settlements To Hazards' Multi-risk



Source: UN-Habitat. Regional Assessment on Urban Vulnerability and Resilience in Southern African Development Community Member States. 2022

Urban Preparedness Project in Southern Africa.



World Food
Programme



Creating a **better understanding** amongst actors in urban settings of the context and vulnerabilities of the urban environment and



Providing a **set of consolidated tools** for urban preparedness through an **ESSENTIAL NEEDS ANALYSIS**

**CONTEXT
ANALYSIS**

1

**Urban
Vulnerability
Assessment & ENA**

2

**CBT, Targeting and
Delivery**

3

SAVING
LIVES
CHANGING
LIVES



European Union
Civil Protection and
Humanitarian Aid

Preparedness Stakeholders in Urban Settings.



World Food Programme

CONTEXT ANALYSIS

1

COORDINATION FRAMEWORK.

Gaps Analysis:

GAP NATIONAL – LOCAL

(Administrative, NDMA, VAC)

GAP LOCAL – LOCAL

(Administrative / NDMA)

Community Participation

LOCALISING PREPAREDNESS TO ACHIEVE RESILIENCE:

Urban Authorities / Local Governments / CBOs into:

- **Vulnerability Assessments**
- **Urban Social Registry**
- **Anticipatory Actions**
- **Awareness Campaigns & Community Involvement**

Urban Working Group?

(Opening dialogue towards NUP)

SAVING
LIVES
CHANGING
LIVES



European Union
Civil Protection and
Humanitarian Aid

Main Urban Vulnerability Drivers.

Urban Vulnerability Assessment & ENA

2



World Food Programme

SAVING
LIVES
CHANGING
LIVES



European Union
Civil Protection and
Humanitarian Aid

ELIGIBILITY:
Intersection of
Vulnerability
Categories



**Family size
+ Demographics of HOH**



Employment



WASH + Energy



**Land Tenure/House Tenancy
+ Materials**



Education



Awareness (Perception of Risk)

Vulnerability Category	Demographics	Livelihoods Shocks Assets
Extremely vulnerable	<ul style="list-style-type: none">Child headed householdsOrphanhoodpoor hygiene practicespresence of HIV in the householdearly teenage pregnancylow wagesrisky sexual behaviourwaste recycling	<ul style="list-style-type: none">high mortalitylow wagesdepressionlikely outbreaks (disease)high crime ratehuman traffickingfamily breakupsGBV



Vulnerability Assessment Gaps Analysis:

- Housing, WASH, services, and other relevant data **not integrated**
- Household data not combined with **Exposure** to Hazard (Risk Mapping)
- Data **Availability**

Vulnerability Assessment

potential intersection between
Social Protection &
Disaster Risk Management

Urban Vulnerability Assessment & ENA

2

FROM:

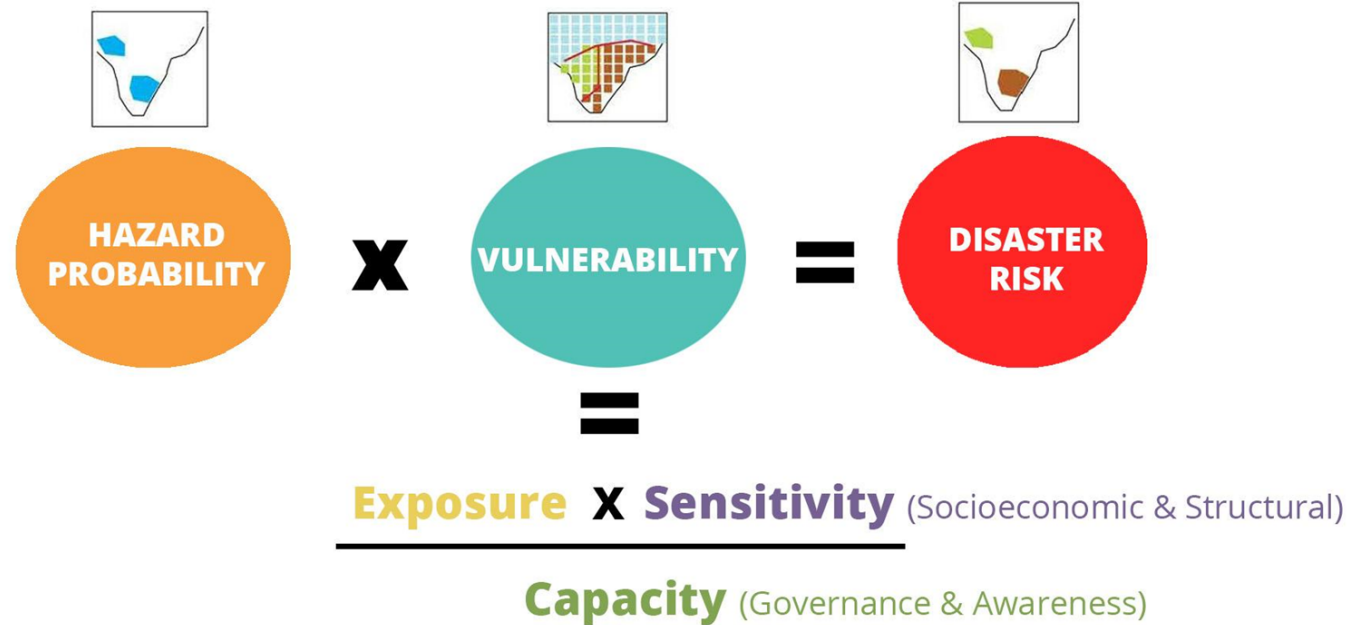
Traditional VAC Analysis Framework



Socio Economic Profile

TO:

Integrated Risk Analysis Framework



SAFEGUARD

Risk Management & Civil Protection

Risk Mapping of
Hazardous Areas

Infrastructure Resilience
Programmes

SAFER ENVIRONMENT

**VULNERABILITY
ASSESSMENT**

ASSIST

Social Protection

Urban Social Registry
with Vulnerability Ranking
Including Exposure Levels

Assistance Programmes

MAPPING BENEFICIARIES

Preparedness Activities through CASH.

VAM / ENA / CBT

3

GEOGRAPHIC TARGETING

**Vulnerability
Hotspots
Identification:**
where are the ultra-
vulnerable located?

VULNERABILITY ASSESSMENT

Eligibility Criteria:
Who are the ultra-
vulnerable in those
hotspots?

ESSENTIAL NEEDS:
What do family
consume monthly?
(e.g food and non-
food)

**Minimum
Expenditure
Basket**
(Representative cohort -
consuming around
2,100 cal pp/day)

MINIMUM SURVIVAL BASKET

Transfer Value:
Which is the **most
appropriate
transfer value** for
those categories in
those hospots?



Lessons Learned / Post-Cyclone Urban Response Madagascar



Time Of Response



Clusters Coordination



Transfer Value



**Mobile Registration + Cash
In Post-cyclone Emergency**



**Unique Register As A
Coordination Tool**



World Food
Programme

SAVING
LIVES
CHANGING
LIVES



European Union
Civil Protection and
Humanitarian Aid

Kai Roehm | Regional Programme Advisor

WFP Regional Bureau Johannesburg

kai.roehm@wfp.org

Arianna Francioni | Project Coordinator – Urban Preparedness

WFP Regional Bureau Johannesburg

arianna.francioni@wfp.org

THANK YOU.